



*SPINN*

*SPINN INDIA*

SPINN INDIA IS ISO 9001 CERTIFIED IN 2024

[www.spinnindia.com](http://www.spinnindia.com)



SPINN



## About us

SPINN INDIA Pune was established in year 1975 to provide measuring solutions to Bearing industries & Automotive industries with the help of wide range of pioneered products.

The company concentrated on manufacturing of Measuring Instruments to suit the specific requirements of its main users (i.e Bearing Manufacturers and Automobile Manufacturers).

The company today is only leading Manufacturer of Measuring Instruments required by Bearing Industries in this country. Since its inception the company has grown manifold mainly in terms of Product Range & Geographical spread of clientele along with various processes in manufacturing , inspection of components and assembly line.

The company has been successful in introducing many new models of measuring instruments useful for the bearing Industry and automotive industry which are the result of the continued efforts put in by its team. The company is proud to say that their products are used as the only standard gauges by all bearing companies in India.

SPINN INDIA is AN ISO 9001 certified company





# Major Verticals



**Gauges and Fixtures**

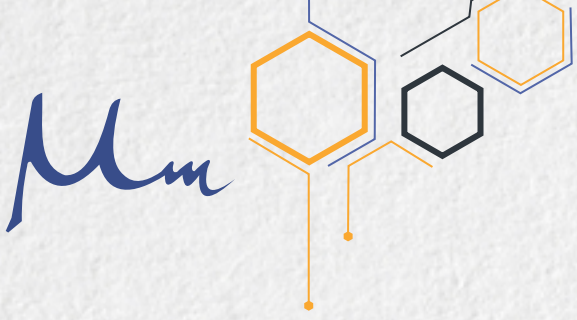


**Component Machining**



**Scrap Recycling**





# RESOURCES

- ◆ SPINN INDIA is operating from three plants. All situated in city Pune which is the dynamic & growing industrial hub of India.
- ◆ Manufacturing facility is spread over area of 44,000 Sq. Ft. area (4400 Sq. Mt.)
- ◆ Manufacturing facility is equipped with state of art machinery as below,







# INTERNATIONAL Clienteles



## Americas

- SKF Do Brasil Ltda.
- SKF Canada Ltd.
- SKF Solution Factory Birmingham USA
- SKF Do Mexico
- Schaeffler Group USA Inc. USA
- Schaeffler Brasil Ltda
- General Industrial Goods & Services S.A. de C.V. Mexico.
- LEWIS Industries USA
- Aerostar MFG USA
- Camino San Lorenzo Mexico
- Bearings Limited USA
- Jeff Weatherman American Roller Bearing Company USA
- Especialidades Termicas, S.A De C.V Mexico
- Flowserve Mexico
- Jalter, S.A. De C.V. Mexico
- Albion Devices, Inc USA
- WHB Automotive Brazil

## Europe

- SKF ESPAÑOLA SA Spain
- LLC SKF Tver Russia
- SKF LTD. UK
- SKF BEARINGS BULGARIA
- SKF Italy
- SKF POLSKA S.A. Poland
- SKF FRANCE
- SKF ÖSTERREICH AG AUSTRIA
- PSC SKF UKRAINE
- Schaeffler Skalica, spol. sro Slovakia
- Schaeffler Technologies AG & Co. KG Germany
- BIFRANGI GmbH Austria
- BIFRANGI S.P.A Italy
- METER S.P.A Italy
- M4U srl Italy
- 3T, s.r.o Slovakia
- YAKINDOGU OTOMOTIVE Turkey
- O-Oka Europe GmbH
- DVS PRODUCTION GmbH Austria
- LION INDUSTRIAL MATERIALS GmbH Austria
- Brammer S.A. Poland
- TECHNO TOTAL SOLUTIONS S.R.L. Italy

## South East Asia

- Schaeffler Manufacturing (Thailand)
- Schaeffler Japan
- Schaeffler Vietnam
- SKF TAIWAN Co.Ltd.
- PT SKF INDONESIA
- O-OKA CORPORATION

## Asia

- Schaeffler China Co. Ltd.
- Wuxi Sunpart Industry Co. Ltd. China
- SKF Actuation System Pinghu China
- SKF (Shanghai) Automotive Technologies. Co.Ltd. China
- SKF (Dalian) Bearings & Precision Technologies. Co.Ltd. China
- SKF (Shanghai) Bearings, Ltd. China
- SKF Automotive Technologies China
- SKF (Jinan) Bearings & Precision Technologies Products Co., Ltd. China
- Qingdao Faith Trading Company China
- CHENG DAI CO. LTD. China

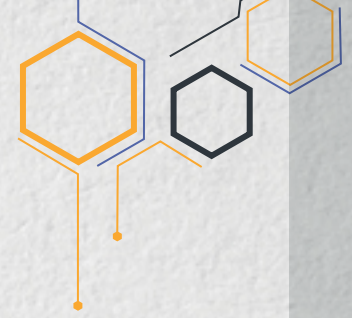
## Other

- SKF SOUTH AFRICA (PTY) LTD.
- SKF Australia





# DOMESTIC CLIENTELES



## West Region

- SKF India Limited Pune, Maharashtra
- SONA BLW Precision Forgings Ltd Pune, Maharashtra
- NRB Industrial Bearings Limited Aurangabad ,Maharashtra
- Delux Bearings Pvt. Ltd Mumbai, Maharashtra
- Kalyani Technoforge Ltd. Chakan, Maharashtra
- Speciality Sintered Products Pvt. Ltd. Khandala, Maharashtra
- Shark Enterprises Kolhapur, Maharashtra
- Omkar Engineering Unit-ii Aurangabad, Maharashtra
- Ashok Leyland Ltd Bhandara, Maharashtra
- BAJAJ Auto LTD. Pune, Maharashtra
- Supreme Steel Industries Panvel, Maharashtra
- Mahindra Sanyo Special Steel Pvt Ltd. Maharashtra
- Supertech Kolhapur, Maharashtra
- Schaeffler India Limited Talegaon Dabhade, Maharashtra
- AAA Engineering Services Nashik, Maharashtra
- Techno Trak Engineers Ahmednagar, Maharashtra
- Vipul Engineering Company Mumbai, Maharashtra
- Threadlines (india) Kolhapur, Maharashtra

## West Region

- Lohaakar Industries Une, Maharashtra
- Rsb Transmissions (i) Ltd. Pune, Maharashtra
- SS Engineering Company Mumbai, Maharashtra
- Autocomp India Pvt. Ltd. Nashik, Maharashtra
- Charane Industries Kolhapur, Maharashtra
- Texspin Bearings Limited Ahemdabad, Gujrat
- Schaeffler India Limited Gujrat
- National Engineering Industries Ltd. Vadodara, Gujrat
- Turbo Bearings Private Ltd. Gujrat
- Skill Precision Balls Pvt. Ltd. Rajkot, Gujrat
- Rolex Rings Private Ltd. Rajkot, Gujrat
- Skp Bearing Industries Gujrat
- Siddhi Steels Pvt. Ltd Gujrat
- Jyoti Engineering Works Gujrat
- Fluid Tech Systems Ahmedabad, Gujrat
- Kasuma Auto Eng. Private Ltd. Gujrat
- NBI India Pvt. Ltd. Ahmedabad Gujrat
- MRS Bearings Pvt. Ltd Gujarat

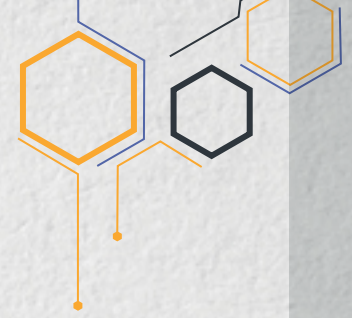
## East Region

- SKF India Ltd Jamshedpur Jharkhand
- Timken India Limited Jharkhand
- Omni Auto Limited Jharkhand
- Rba Ferro Industries Pvt. Ltd West Bengal
- Ramkrishna Forgings Ltd. Jharkhand
- Metcal Instruments India Pvt. Ltd. Jharkhand
- Bmc Ferrocast Pvt. Ltd Jamshedpur
- Dilip Engineering Pvt. Ltd Jharkhand
- Galaxy Hydraulics Jharkhand
- Anand Traders Jharkhand
- SS V-tech Jharkhand
- Nutech Auto Private Ltd. Jharkhand
- Ray Enterprises Jamshedpur Jharkhand





# DOMESTIC CLIENTELES



## South Region

- Praxair India Private Limited Tamil Nadu
- Balaji Press Products India Pvt. Ltd. Tamilnadu
- A. E. Engineering Tamilnadu
- Eppinger Tooling Asia Pvt. Ltd Tamilnadu
- Ashok Leyland Ltd. Tamilnadu
- GKN Driveline (India) Ltd Tamilnadu
- Oerlikon Friction Systems (india) Pvt. Ltd Tamilnadu
- Sundram Fasteners Limited Pondyicherry
- Sundram Fasteners Limited Pondyicherry
- Skf India Limited Bengaluru, Karnataka
- Pushp Industries Bengaluru, Karnataka
- V N R Precisions Bengaluru, Karnataka
- SAAB Engineering Unit 1 Bengaluru, Karnataka
- JLM Automatics Bengaluru, Karnataka
- Divgi Transmission Systems Sirsi, Karnataka
- Rajamane Innovations Bengaluru, Karnataka

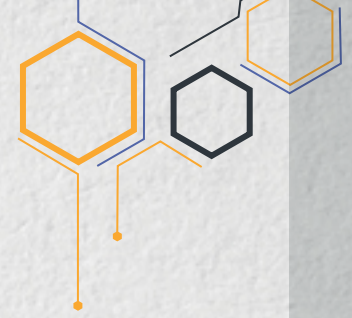
## South Region

- Yenkays Engineering Pvt Ltd. Belgavi, Karnataka
- Jina Engineers Pvt. Ltd. Belgavi, Karnataka
- Rajamani Enterprises Hyderabad
- Jk Fenner (india) Limited Hayderabad
- Bay-forge Private Limited Chengalpattu

## North Region

- Skf India Limited Uttarakhand
- National Engineering Industries Ltd. Jaipur, Rajasthan
- Accurate Ball Industries Pvt. Ltd. Jaipur Rajasthan
- Kansara Engineers Pvt. Ltd. Jodhpur Rajasthan
- Srct Globex Private Limited Ajmer Rajasthan
- Metcal Instruments India Pvt. Ltd. Rajasthan
- Manu Yantralaya (p) Ltd Jaipur Rajasthan
- Mahle Engine Components India Private Madhyapradesh
- Avtec Limited Madhyapradesh
- Tata Precision Industries (india) Limited Madhyapradesh
- Kafila Forge Ltd. (unit li) Delhi
- Sona Blw Precision Forgings Ltd. Haryana
- R. K. Gupta Incorporation Jalandhar, Punjab
- Indosteel Engineers Jalandhar, Punjab
- Micro Seamless Machining & Forging Himachal Pradesh
- K. S. Enterprises Faridabad, Haryana





# Product Line

**SPINN  
BR SERIES**

**SPINN  
RB SERIES**

**OTHER TYPES  
OF GAUGES**

**FIXTURES**



# SPINN BR SERIES

## Mechanical Comparators

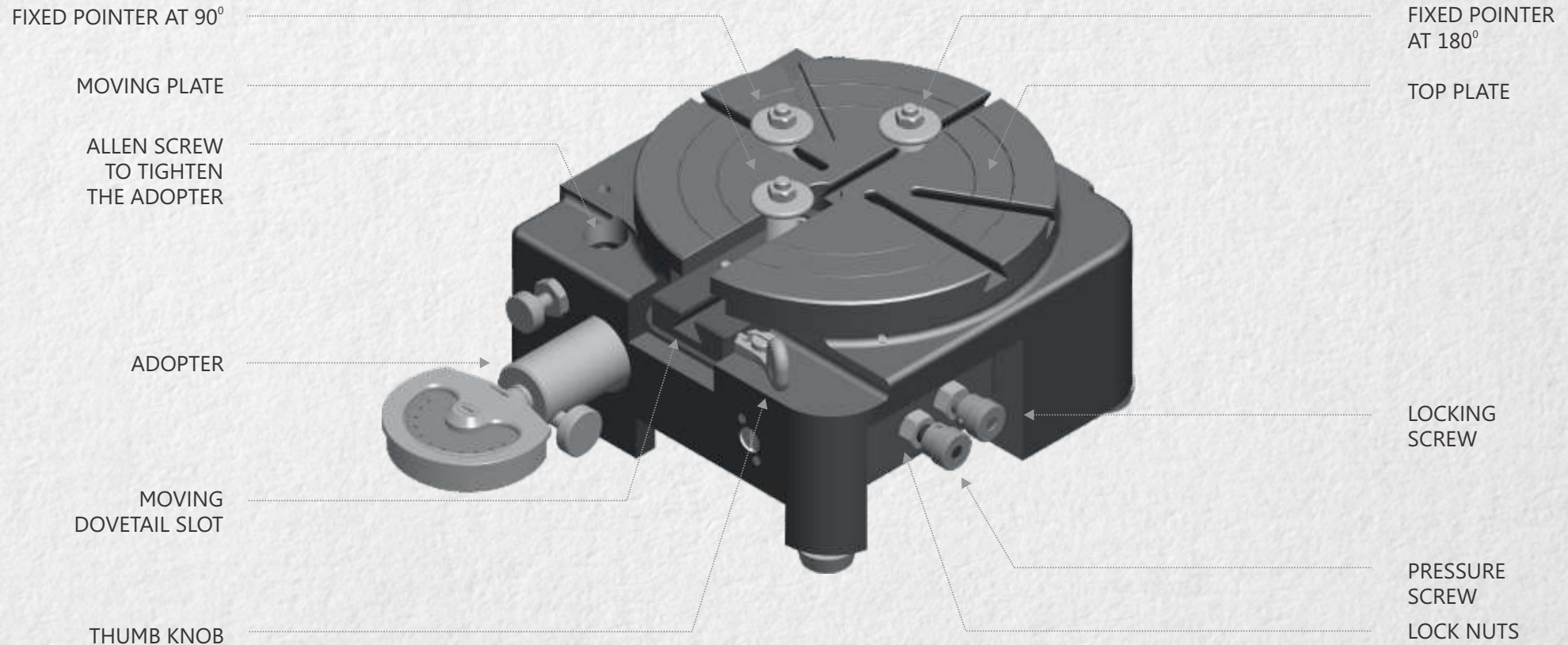


Mm

BR SERIES

## SPINN BR - Series Mechanical Comparator

The comparator is tested & certified for its accuracy by Mechanical Engineering Research & Development Organization PUNE INDIA, A wing of Council of Scientific & Industrial Research India







Spinn BR-Series comparator is designed specifically for precision measurement of



Outside diameters (OD)	Squareness of diameters to end faces	Raceway or track diameters of Ball & roller bearing
Internal diameters (ID)	Wall thickness	
Ovality two & three point measurement	Combination of above measurements	

And it comes in different configurations with different sizes of top plate diameters.

## TECHNICAL SPECIFICATION

Comparator Model	SPINN BR 0 (120mm)	SPINN BR 1 (165mm)	SPINN BR 1 (200mm)	SPINN BR 2 (250mm)	SPINN BR 3 (300mm)	SPINN BR 3.5 (350mm)	SPINN BR 4 (400mm)	SPINN BR 4.5 (450mm)
Max measuring range outside diameter	20 – 100 mm	20 – 145 mm	20 – 180 mm	20 – 230 mm	20 – 280 mm	20 – 330 mm	20 – 380 mm	20 – 430 mm
Max measuring range internal diameter	40 – 110 mm	40 – 155 mm	40 – 190 mm	40 – 240 mm	40 – 290 mm	40 – 340 mm	40 – 390 mm	40 – 430 mm
Max measuring range internal diameter By using seating pad and measuring hooks With carbide tip.	15 – 40 mm	20 – 40 mm	20 – 40 mm	20 – 40 mm	20 – 40 mm	20 – 40 mm	20 – 40 mm	20 – 40 mm
Top plate diameter	120 mm	165 mm	200 mm	250 mm	300 mm	350 mm	400 mm	450 mm
Top plate hardness	60 - 62 HRC	60 - 62 HRC	60 - 62 HRC	60 - 62 HRC	60 - 62 HRC	60 - 62 HRC	60 - 62 HRC	60 - 62 HRC
Least count depending on the dial indicator	0.01mm or 0.001 mm	0.01mm or 0.001 mm	0.01mm or 0.001 mm	0.01mm or 0.001 mm	0.01mm or 0.001 mm	0.01mm or 0.001 mm	0.01mm or 0.001 mm	0.01mm or 0.001 mm





BR SERIES



## SPINN BR - 0 Mechanical Comparator

Top Plate Diameter 120 mm. Useful for checking Inside Diameters, Outside Diameters, quareness of Face to Axis, Concentricity, Run out ovality.



**BR - 0 Dia 120mm**

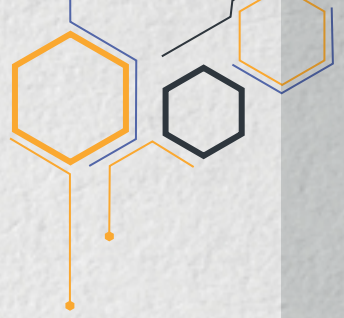


**BR - 0 with Coated Plate**





BR SERIES



## SPINN BR-1 Mechanical Comparator

Top Plate Diameter 165 mm, 200 mm, plate with embeded carbide strips. Useful for checking Inside Diameters, Outside Diameters, quareness of Face to Axis, Concentricity, Run out ovality.



**BR - 1 Dia 165mm**



**BR-1 Dia 165mm  
(with Coated Plate)**





BR SERIES



## SPINN BR-2 Mechanical Comparator

Top Plate Diameter 250 mm, 300 mm, 350 mm, 400mm, 500 mm and 600 mm. Useful for checking Inside Diameters, Outside Diameters, Squareness of Face to Axis, Concentricity, Run out ovality.





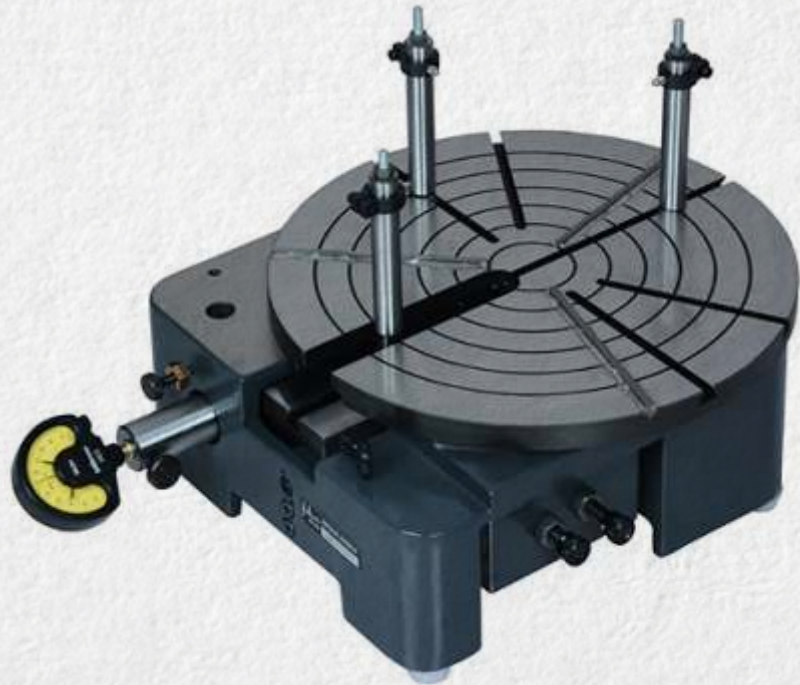
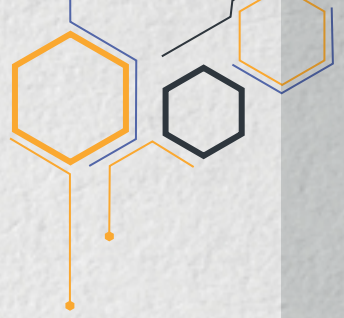
# Accessories

- Spacers
- Dovetail Screw
- Measuring Discs
- Measuring Hooks
- Adaptor for Dial Indicator
- Fine Zero Adjusting Screw with Brass Nut
- Thumb Knob
- Locking Screw with Knob
- Pressure Screw with Knob
- Leaf Spring
- Tension Spring
- Trangular Pices
- Main Washer
- Concentricity Bracket  
(Additional Dial Holder Stand)



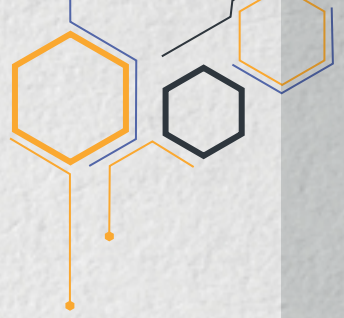


# Special Accessorise ✨



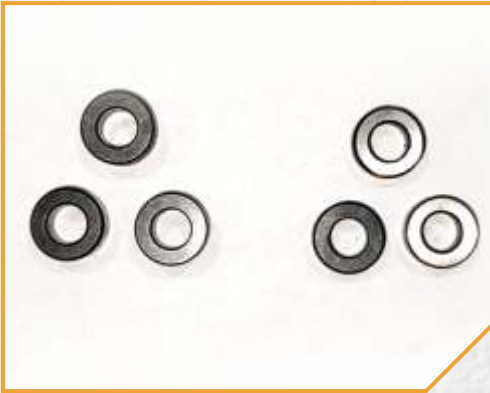


# Mechanical Comparators & Accessories



**Sr. No.**

1



**Description**

(Available in sizes of 1 mm to 10 mm in 0.5 mm step as standard).  
But can be manufactured in any size based on requirement.  
Material – EN31 hardened & ground.

Customizable sizing is possible

2

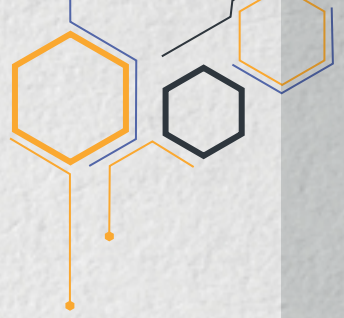


Dovetail screws with nuts  
(standard set of three – 1 no 65mm & 2 Nos of 35 mm length)

Customizable sizing is possible



# Mechanical Comparators & Accessories



**Sr. No.**

3



**Description**

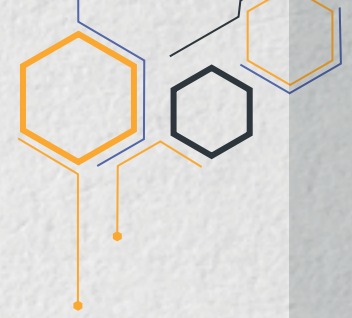
Measuring Discs (Set of three)

- Dia 15 mm
- Dia 18 mm
- Dia 20 mm
- Dia 22 mm
- Dia 25 mm
- Dia 32 mm
- Dia 40 mm
- Dia 45 mm

Material – EN31 hardened & ground.



# Mechanical Comparators & Accessories



**Sr. No.**

4



**Description**

Measuring Hooks with carbide points along with seating pad for checking internal diameter less than 50 mm

Customizable sizing is possible

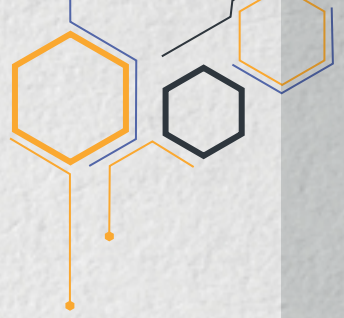
5



Standard adaptor for dial indicator  
Available in size OD 28 To 30 mm



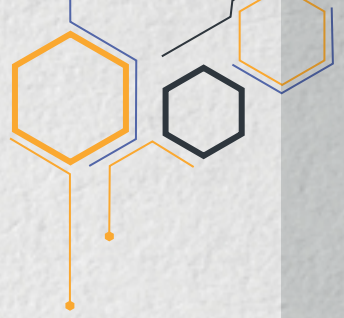
# Mechanical Comparators & Accessories



Sr. No.	Image	Description
6		Fine Zero Adjusting Screw with Brass
7		Thumb Knob
8		Locking screw with knob
9		Pressure screw with knob



# Mechanical Comparators & Accessories



Sr. No.	Image	Description
10		Leaf spring
11		Tension Spring
12		Triangular Pieces
13		Main Washer



# Mechanical Comparators & Accessories



**Sr. No.**

14



**Description**

Concentricity Bracket (Additional Dial Holder Stand)



# SPINN RB SERIES

## Comparator Design



# Comparator is Designed Specifically for Precision Measurement of

**Height or Width**

**Groove Location**

**Flatness**

And it comes in different configurations with different sizes of top plate diameters.

## MECHANICAL COMPARATORS

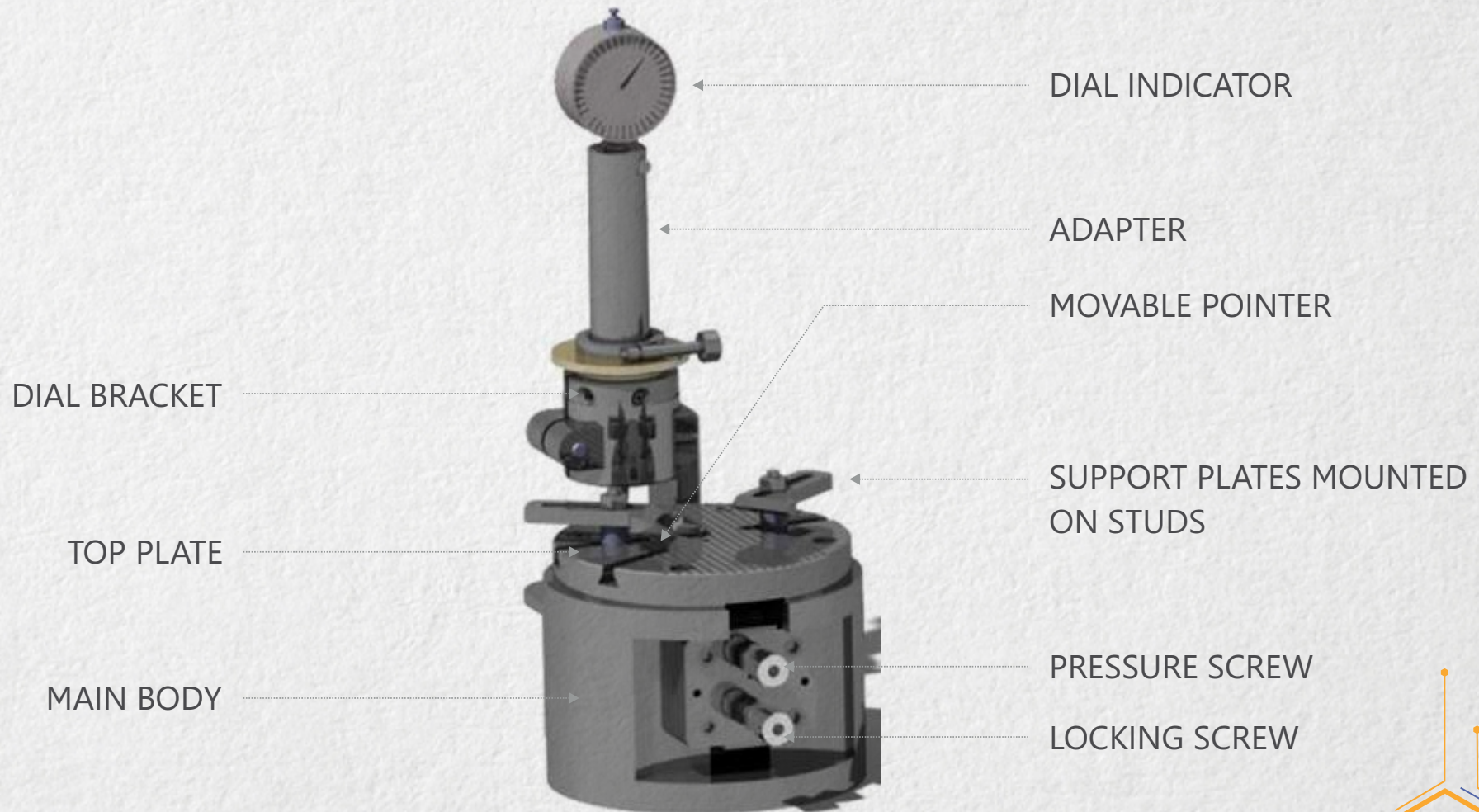
Comparator Mode	SPINN RB 1	SPINN RB 0 (140mm)	SPINN RB 1 (180mm)	SPINN RB 1 (200mm)	SPINN RB 2 (250mm)	SPINN RB 2 (300mm)	SPINN RB 2 (350mm)	SPINN RB 2 (400mm)	SPINN RB 2 (500mm)
Vertical Travel	0-10 mm	0-10 mm	0-10 mm	0-10 mm	0-12 mm	0-12 mm	0-12 mm	0-12 mm	0-12 mm
Top Plate Diameter	140 mm	165 mm	180 mm	200 mm	250 mm	300 mm	350 mm	400 mm	500 mm
Top Plate Hardness	60 - 62 HRC	60 - 62 HRC	60 - 62 HRC	60 - 62 HRC	60 - 62 HRC	60 - 62 HRC	60 - 62 HRC	60 - 62 HRC	60 - 62 HRC
Least Count Depending on the Dial Indicator	0.01 mm or 0.001 mm	0.01 mm or 0.001 mm	0.01 mm or 0.001 mm	0.01 mm or 0.001 mm	0.01 mm or 0.001 mm	0.01 mm or 0.001 mm	0.01 mm or 0.001 mm	0.01 mm or 0.001 mm	0.01 mm or 0.001 mm
Range of Diameters Useful for	40 mm to 100 mm	40 mm to 125 mm	40 mm to 140 mm	40 mm to 160 mm	80 mm to 200 mm	80 mm to 250 mm	80 mm to 300 mm	80 mm to 350 mm	80 mm to 450 mm



Mm

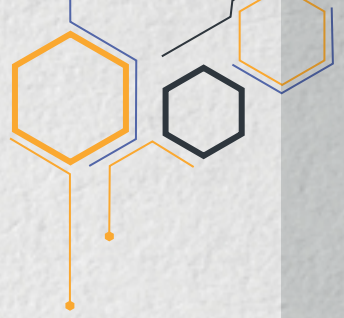
RB SERIES

# Mechanical Comparators

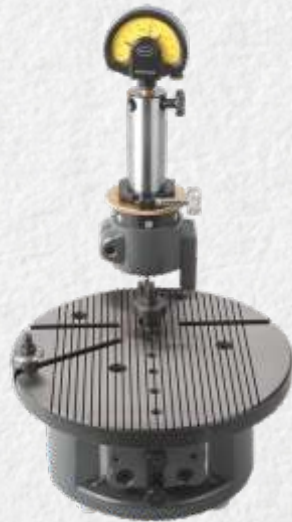




# Mechanical Comparators & Accessories



**RB 0**  
Dia 140 mm



**RB 1**  
Dia 200 mm



**RB 2**  
Dia 250 mm  
to 350 mm

**RB 2**  
Dia 400 mm

**RB 2**  
Dia 450 mm  
& above



# OTHER TYPES OF GAUGES



# Width Clock Gauge

- Width clock gauge is designed to measure width or total height of component,
- Available in customized sizes of top plate to accommodate different diameter of components.



**Small Width Clock Gauge**  
 OD range = upto  $\varnothing$  80 mm  
 Width range = upto 75 mm



**Big Width Clock Gauge**  
 OD range = upto  $\varnothing$  180 mm  
 Width range = upto 75 mm



Mm

TYPES OF GAUGES

# Standard Width Gauge

- Standard Width gauge is designed to measure width or total height of component
- Available in customized sizes of top plate to accommodate different diameter of components.





*Spin*

TYPES OF GAUGES

# Width Gauge With Carbide Plate



OD range = upto  $\varnothing$  60 mm  
Width range = upto 80 mm



# Total Width Variation Measurement Gauge

- HBV is type of gauge used to Measure total with variation of component during machining process.
  - Available in customized sizes of top plate to accommodate different diameter of component



**Small HBV 1 Gauge**

OD range = upto  $\varnothing$  120 mm  
 Width range = upto 65 mm



**Big HBV 1 Gauge**

OD range = upto  $\varnothing$  220 mm  
 Width range = upto 65 mm



SPINN

TYPES OF GAUGES

# PB 1 GAUGE



OD range = upto  $\varnothing$  120 mm  
Width range = upto 45 mm



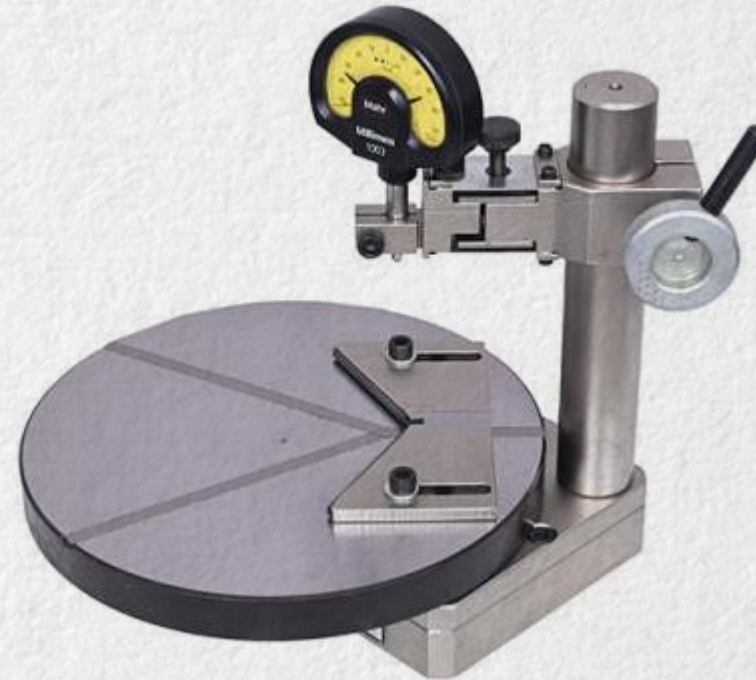
# Special Width Gauge



## Small Special Width Gauge

OD range = upto  $\varnothing$  130 mm

Width range = upto 80 mm



## Big Special Width Gauge

OD range = upto  $\varnothing$  200 mm

Width range = upto 145 mm



# Inside Bore Gauge ( Small, Medium, Big )

## Small Inside Bore Diameter Gauge

This gauge is used to measure  
id/bore dia of component.



SMALL

## Medium Inside Bore Diameter Gauge

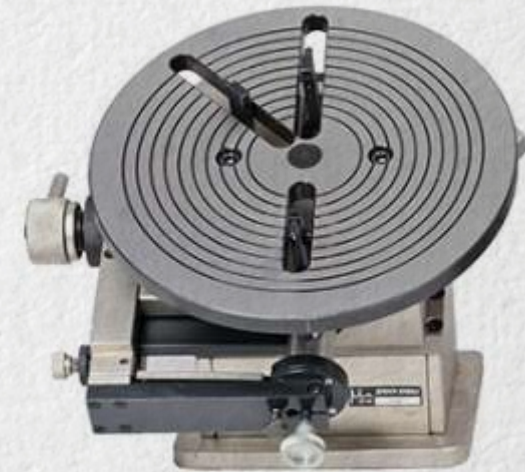
This gauge is used to measure  
id/bore dia of component.



MEDIUM

## Big Inside Bore Diameter Gauge

This gauge is used to measure  
id/bore dia of component.



BIG



# Manual RC Gauge For TRB

- This is manual Radial clearance measurement gauge designed for taper roller bearings.
- Size range can be customized based on requirement.

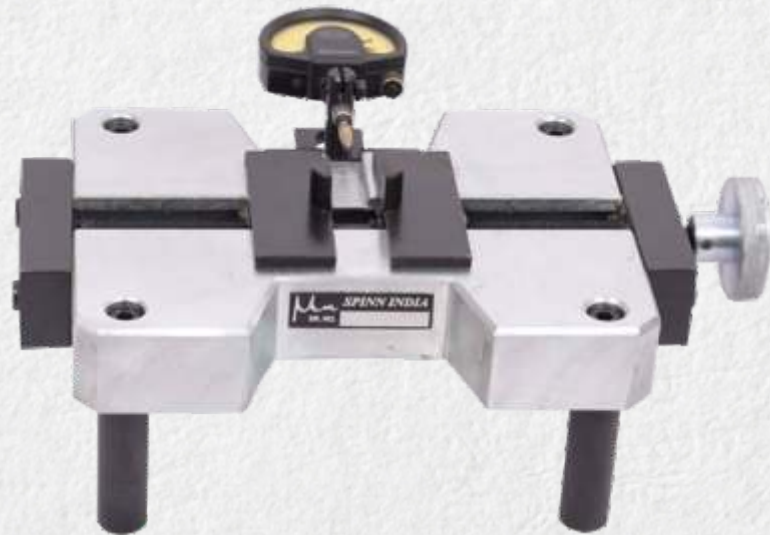


**Range**  
upto OD  $\varnothing$  170 mm



# Manual RC Gauge for CRB & DGBB

- This is manual radial clearance measurement gauge designed for CRB & DGBB type of bearings.
- Size range can be customized based on requirement.

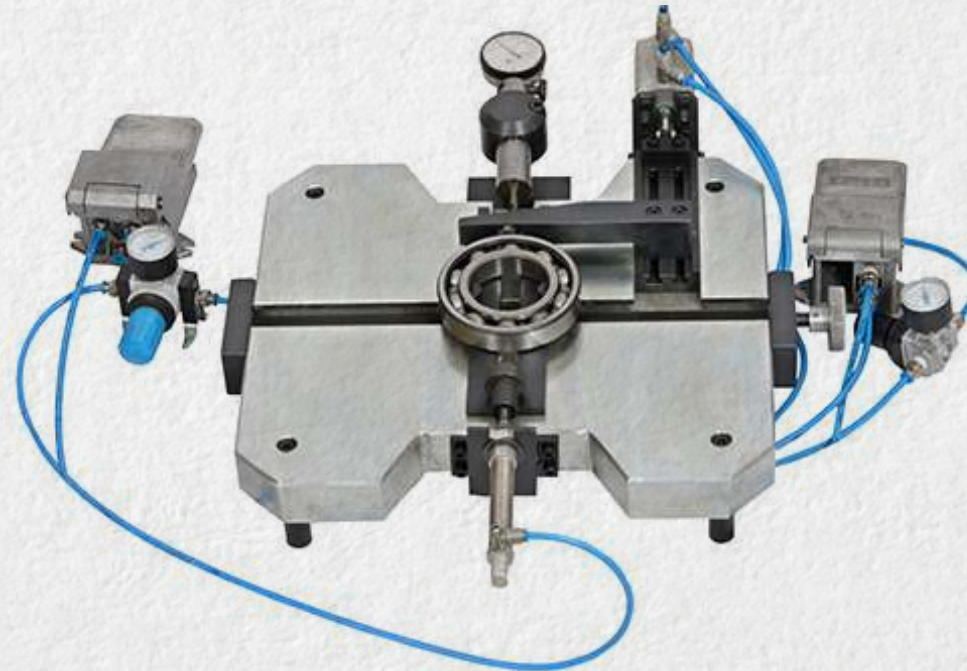


**Range**  
upto OD  $\varnothing$  125 mm



# Pneumatic RC Gauge for CRB & DGBB

- This is Pneumatically operated radial clearance measurement gauge designed for CRB & DGBB types of bearings
  - Size range can be customized based on requirement.

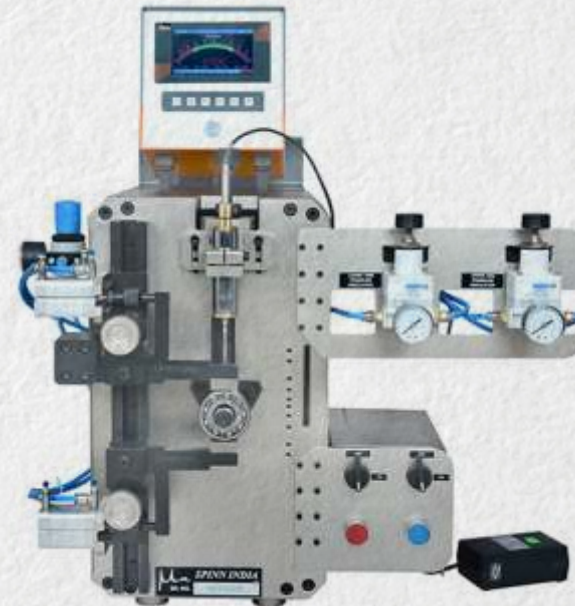


**Range**  
upto OD  $\varnothing$  250 mm



# Vertical RC

- This is Pneumatically operated vertical type of radial clearance measurement gauge for type of bearings.
  - It is installed with load cell for exact application of load.
  - It is installed with DRO (digital read out) with facility of data storage & cp , cpk, values monitoring.



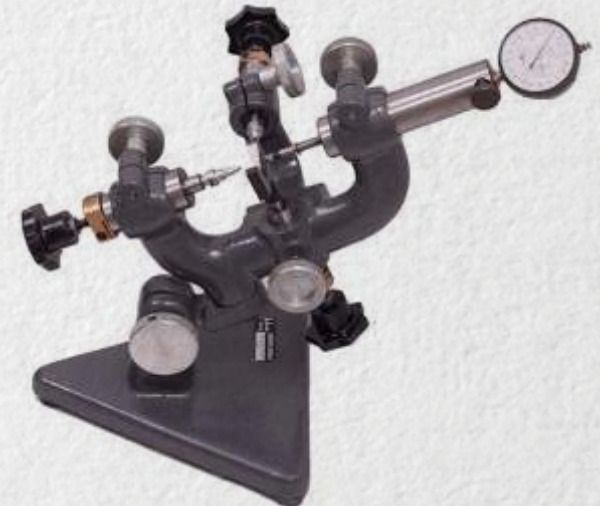
## Range

ID Ø 10 mm to OD Ø 150 mm



# Ball / Roller Diameter Measurement Gauge

- Fixture is used to measure ball or roller diameter with fine adjustments.
  - It is measured based on three-point measurement principles.
    - Range designed for ball is from 3-33 mm.





# Wall Thickness Variation Gauge or Radial Runout Gauge Ekka Gauge

- Used to measure wall thickness variation available in customized sizes of top plate
  - To accommodate different diameters of components





# Radial Run out Gauge

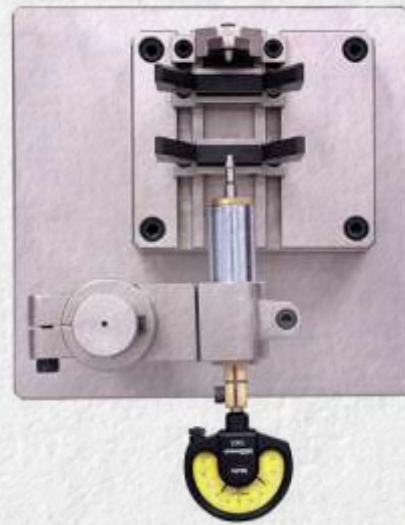
- Used to measure wall thickness variation or radial runout of component.
- Available in customized size of top plate to accommodate different diameter of component.





# Roller Squareness Gauge

- VBI is gauge used for measurement of roller Squareness





# Track Location Gauge

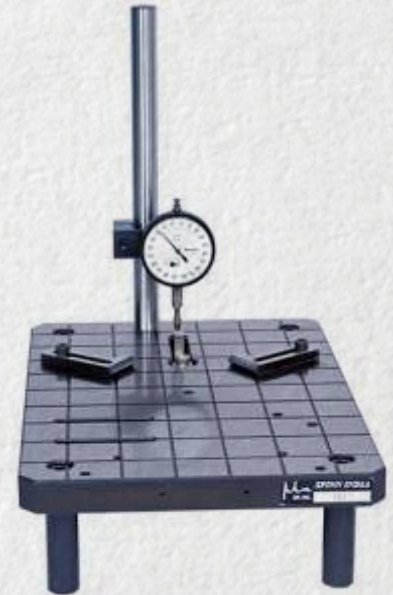
- Track location gauges is used to measure the groove position or track position
- Available in customized sizes of top plate to accommodate different diameter of component.



**SMALL**



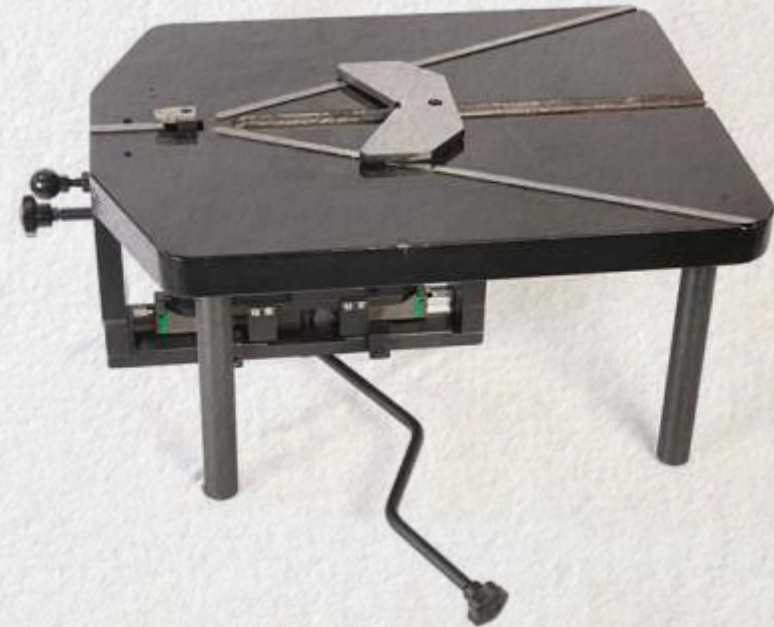
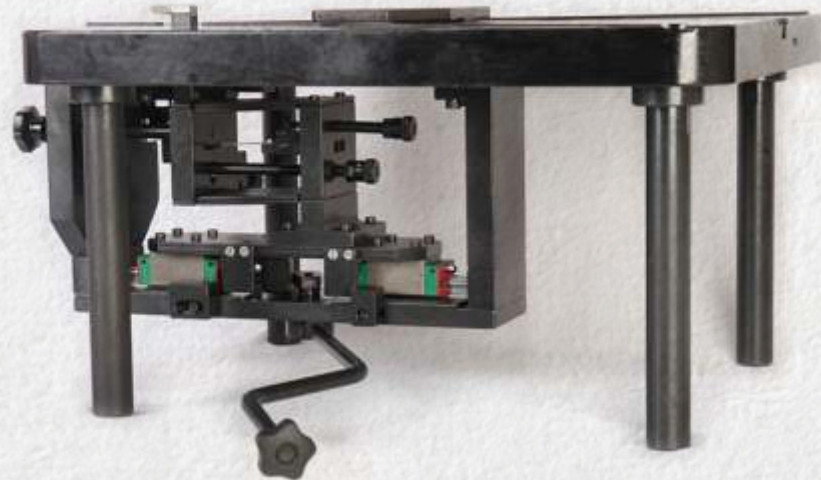
**BIG**





# Taper Measurement Gauge

- This gauge is used for taper angle measurement bearings, can be designed based on range requirement sizes.





# Pitch Gauge

- It used to measure groove position of outer face of range





# TRB Cage Float Mesurment Gauge

- This gauge is used for cage float measurement.
- Size can be customized to accommodate different dimensional range.



**Range**

Ø 15 mm to Ø 104 mm

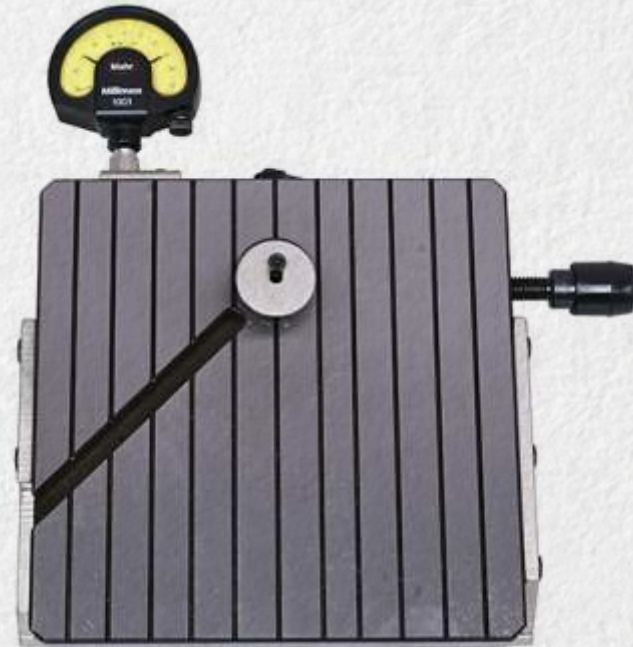


*mm*

TYPES OF GAUGES

# Wall Thickness Variation Gauge

- This gauge is used to measure sheath misalignment





# Flatness Gauge

- This gauge is used to measure flatness or waviness of components face.
- Top plate can be customized to accommodate different dimensional range





# LIP Track Location

- Gauge to measure the lip width & track width of gauge.
  - This is pneumatically operated gauge.
  - Range can be customized based on requirement.





# Two Point OD Measurement Gauge

- **Small to point** measurement gauges this gauge is used for od measurement range of 15 mm to 70 mm
- **Medium two-point** measurement gauges this gauge is used for od measurement range of od 30 mm to 170 mm.
- **Big two-point** measurement gauges- this gauge is used for od measurement range of od 75 mm to 300 mm



SMALL OD



MEDIUM OD



BIG OD



# Depth Gauge

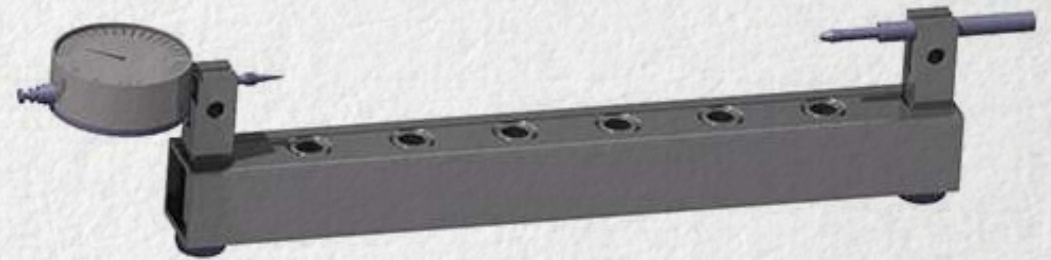
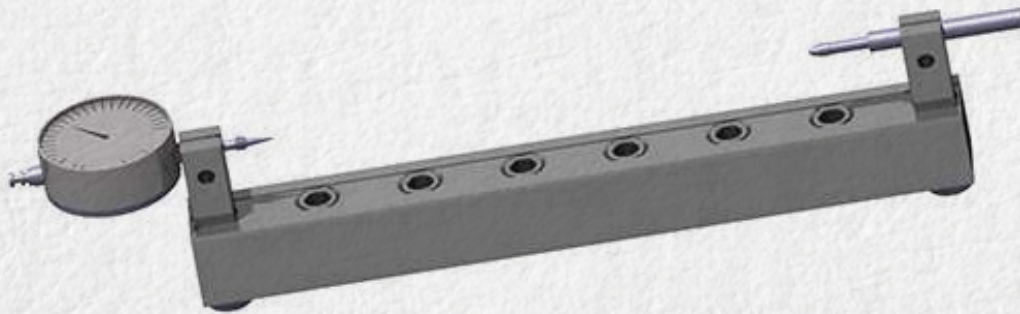
- Customized gauge to measure the depth.





# Bar Gauge

- Bar gauge is used to measure diameter variation of big rings.
- Usually manufactured in range of 300 mm, 400 mm & 600 mm.







TYPES OF GAUGES

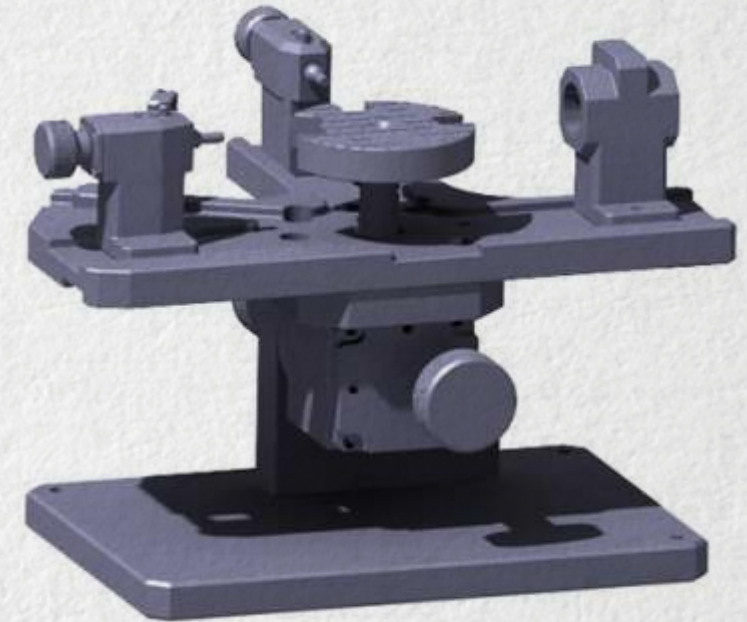
# Diameter Gauge



Diameter Gauge  
Ø10-80



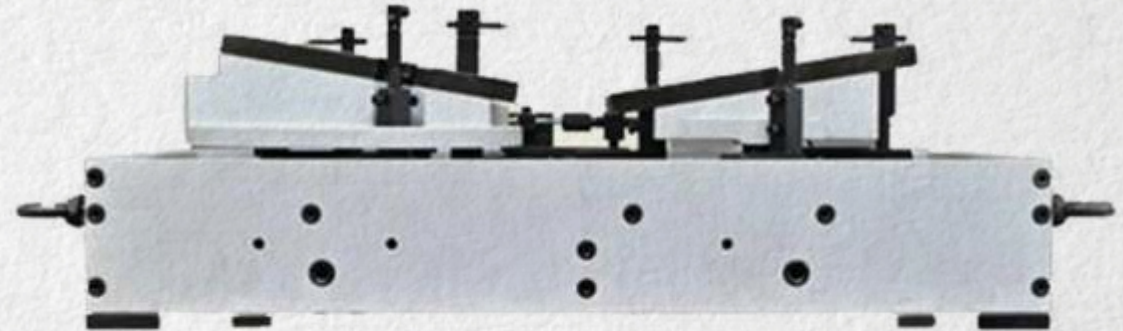
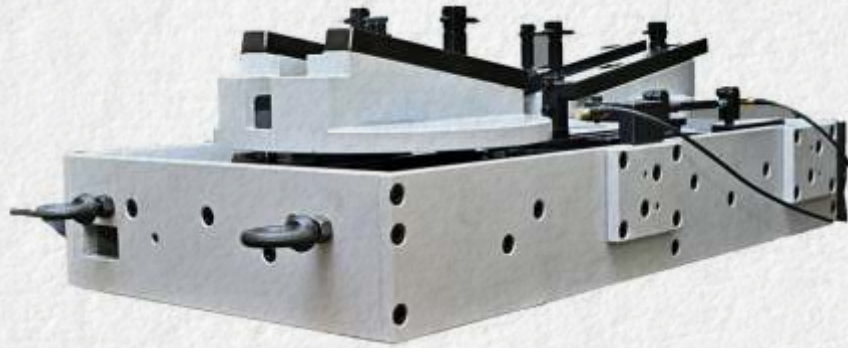
Diameter Gauge  
Ø60-130



Diameter Gauge  
Ø110-180



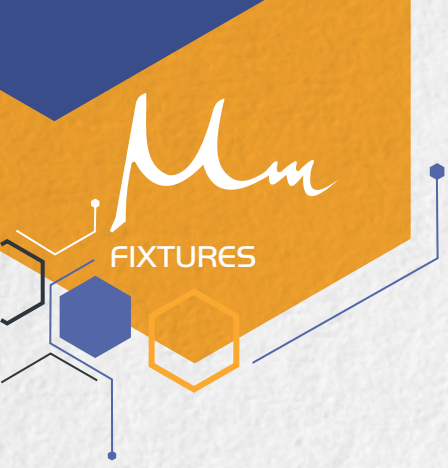
# Spherical Roller Bearing Pairing Gauge





# FIXTURES

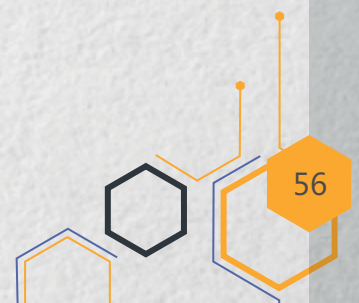




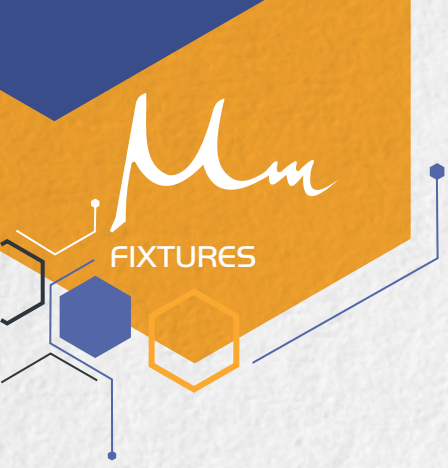
# Swivel Jaws



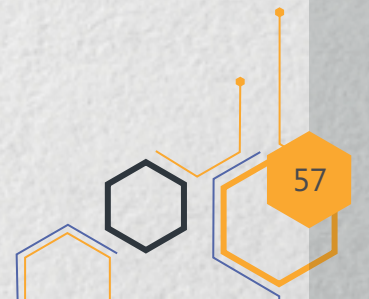
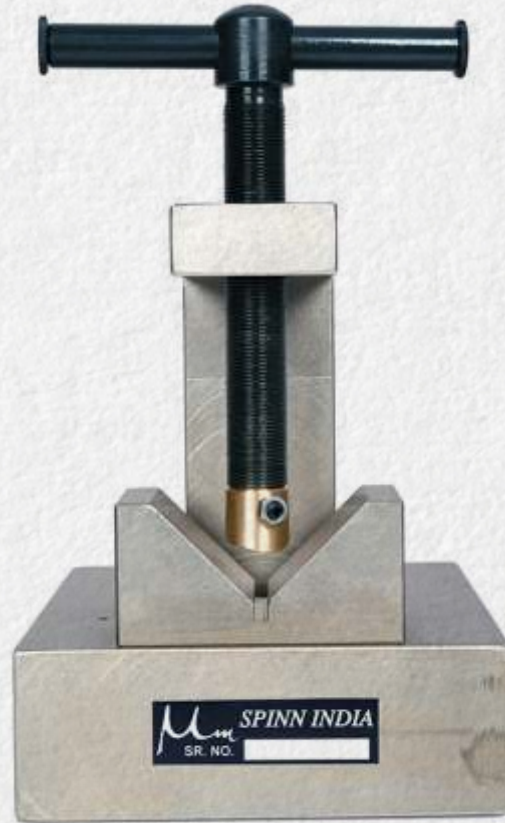
Customised Size is Possible



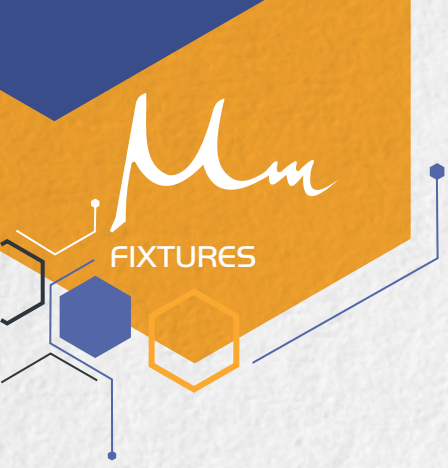




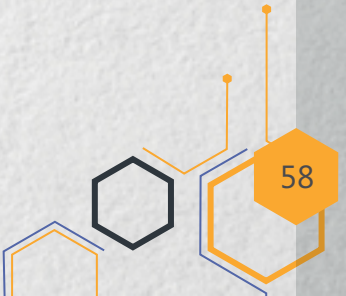
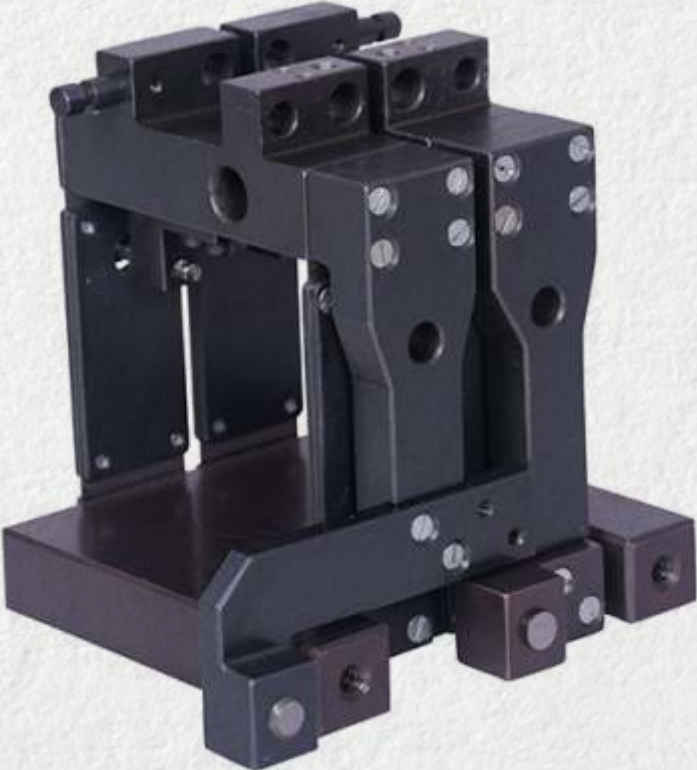
# Mandrel Holding Fixture







# Parallelogram





Mm



# Success Drivers

All the gauges manufactured are termed as an "IMPORT SUBSTITUTE" and thus the Company has been conserving the scarce foreign exchange for the country over the years. Also the company has been awarded as under :

- ★ **National Award for IMPORT SUBSTITUTION by Government of India in the year 1980**
- ★ **Ramabai Joshi Award by Martha Chamber of Commerce and Industries in the year 1980**
- ★ **Certificate of Merit by Institution of Engineers in the year 1984.**





Mm



# Certification



- National Award for IMPORT SUBSTITUTION by Government of India in the year 1980
- Ramabai Joshi Award by Maratha Chamber of Commerce and Industries in the year 1980
- Certificate of Merit by Institution of Engineers in the year 1984.
- ISO Certificate in the year 2024





# SPINN INDIA

SPINN INDIA IS ISO 9001 CERTIFIED IN 2024



## Office & Works



### UNIT - I

SPINN INDIA W 37,  
T-Block MIDC Bhosari,  
Pune 411026 Maharashtra, INDIA



### UNIT - II

SPINN INDIA Gat No. : 1540/1419  
Shri Industries, Sonawane wasti, Sonawane Wasti Road,  
Chikhali, Pimpri Chinchwad, Pune - 411062 Maharashtra, INDIA



### UNIT - III

SPINN INDIA Gat No. : 191  
Shed No 14, Shobha Enterprises,  
Jyotiba Nagar, Behind Jyotiba Mandir,  
Talwade, Pimpri Chinchwad,  
Pune - 411062 Maharashtra, INDIA



Contact : +91 20-27400929



E-Mail : [sales@spinnindia.com](mailto:sales@spinnindia.com)



Website : [www.spinnindia.com](http://www.spinnindia.com)